

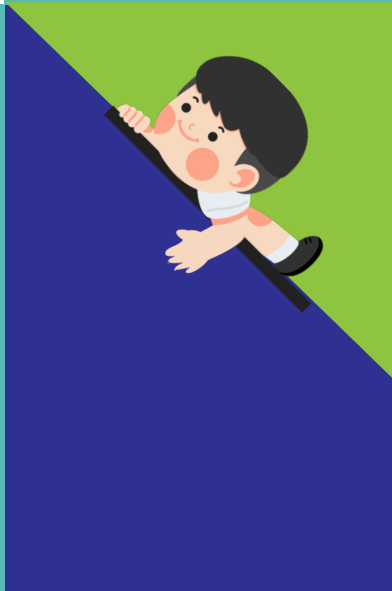


WHAT'S ON IN 2025

AVENUE NEIGHBOURHOOD HOUSE @ ELEY



Avenue
NEIGHBOURHOOD
HOUSE



Who We Are

Avenue Neighbourhood House at Eley (ANH@E), incorporated in 1984, is part of the Australia wide network of Neighbourhood Houses. We aim to strengthen local community interactions by providing social, creative, informative and educational programs at an affordable price.

ANH@E welcomes people of all ages, backgrounds, and abilities to participate in social, educational, recreational, and support activities. Through the provision of a diverse range of programs, individuals can forge friendships, enrich personal development, and overcome social isolation.

ANH@E endeavours to respond to the needs and aspirations of the Whitehorse community, and by aiming to break down social barriers, connecting people to their local community, and giving all participants a greater sense of belonging.

Commitment to Child Safety

Avenue Neighbourhood House at Eley is committed to the safety and wellbeing of all children and young people. Avenue Neighbourhood House at Eley has a commitment to zero tolerance of child abuse. We support and respect all children and young people and are committed to providing a child safe environment. We are committed to the cultural safety of Aboriginal and Torres Strait Islander children, the cultural safety of children from culturally and/or linguistically diverse backgrounds, and to providing a safe environment for children with a disability.

Acknowledgement of Country

Avenue Neighbourhood House at Eley acknowledges the Wurundjeri people of the Kulin Nation, who are the owners of the Land the House is on. We pay our respects to their Elders past and present.



How to Enrol

If you need assistance, just let us know!

Our office hours are 9.00am - 4.00pm Monday to Friday

Telephone : 9808 2000. Email: info@theavenue.org.au.

Website: www.theavenue.org.au

Fees

Things to remember when enrolling:

As a not-for-profit community organisation, we strive to make our classes as low-cost and affordable as possible for everyone. Unfortunately, we are unable to offer casual fees / make up classes for our full term courses.

For continuing classes, preference will be given to existing participants who re-enrol by end of term.

Eligibility & Concession apply for some activities.

For enrolment into Social & Recreational classes please complete an enrolment form (available at Reception) or enrol online via our website www.theavenue.org.au

If you are experiencing financial difficulty and would like to discuss payment options, please talk to us.

You can pay for your term fees by EFTPOS, Credit card (a minimum transaction of \$10 is applicable), online banking or cash.

We are continuously working hard to always ensure that our courses/programs are of the highest quality. Unfortunately in order to achieve this there have been very minor price increases for some of our courses to guarantee the retention of our exceptional tutors. Please note, some fees may be subject to change.

If these changes potentially prevent you from participating, we urge you to reach out to us.

How to Enrol

NDIS

If you wish to enrol in our courses or programs and have an NDIS plan or are eligible for an NDIS plan, there are options available to be able to pay using these funds. For students eligible to receive Skills First Government subsidised training to complete Nationally Recognised Training qualifications or skill sets, the National Disability and Insurance Scheme (NDIS) will not fund any course fees or education materials associated with education and training.

Full details regarding eligibility for government funding, enrolment process, fees, course structure & training assessment, refund policy, complaints and appeals policy please see our website www.theavenue.org.au or contact our Further Education Coordinator.

Transport Options

TRAIN to Box Hill or Nunawading Station,
then catch Bus 735 to East Burwood

TRAM 75 from Melbourne via Burwood Highway,
alight at Royton Street (Stop 68)

Our **COMMUNITY BUS** runs regularly
between Blackburn Railway Station,
local Preschools and our Centre

**booking is essential (small fee applies)

Interested in Volunteering?

We have positions available in administration, classroom support, Board of Governance and bus driving, gardening and cooking program.

Enquires info@theavenue.org.au

Join our mailing list

To subscribe to our mailing list for our regular newsletter, please send your email address to info@theavenue.org.au

Other Course Info

Nationally Recognised Training

See pages 21-24 for course information. For enrolment into Registered Training Organisation (RTO) classes, please call 9808 2000 to make an appointment with our Further Education Coordinator or visit www.theavenue.org.au

Learn Local (Pre-Accredited)

See pages 16-20 for courses and information. For enrolment, please call 9808 2000 and an enrolment form will be provided. Learn Local funded places can only be offered to participants who are Australian citizens or hold permanent residency. Proof of citizenship and eligibility is required upon enrolment.

Cancellation Information

The House reserves the right to alter or cancel classes as necessary. Participants will be notified of any changes prior to the start of classes and given a full refund if the class is cancelled. At least 48 hours notice would be appreciated if you must cancel your enrolment before commencing. Please note cancellation will incur an administration fee.

Classroom Support

Do you require support to enable you to participate fully in activities? If so, please let us know so we can offer assistance.

Index

- About Us .. 1
- Accredited Education .. 21-24
- Active & Fit .. 9
- Annual Art Competition 29
- Barista Skills .. 14
- Café (Intro to Hospitality) .. 24
- Chat & Chew Bingo ..12
- Childcare & Early Learning .. 25
- Classroom Support .. 4
- Community Choir .. 26
- Cook2Learn .. 17
- Creative Minds Art .. 16
- Crochet & Knitting .. 6
- Designing with Canva .. 14
- Digital Skills .. 14
- Eley Park Café ..27
- English For Families..14
- Employable Me..14
- Friday Workshops .. 15
- Fees .. 2
- Gaining the Edge- Digital Literacy 18
- Hand & Foot .. 12
- How to Enrol .. 2
- iPad for Learning .. 18
- Learn Local .. 16 - 20
- Line Dancing.. 10
- LifeSkills.. 21
- Mahjong .. 12
- Mosaics .. 7
- Nationally Recognised Training .. 21-24
- NDIS .. 3
- Nourishing Neighbours.. 30
- Other Special Events .. 26
- Painting, Sketching, Drawing .. 6
- Pilates .. 8
- Refresh .. 23
- Renew .. 22
- Singalong .. 26
- Sleeping Star Productions .. 28
- Strength Training .. 9
- Transport Options .. 3
- Ukulele .. 13
- Visual Art Journaling .. 8
- Volunteering.. 3
- Watercolour Painting .. 7
- Wednesday Walkers .. 10
- Whitehorse Community Houses .. 27
- Writers Group- Children's Literature..13
- Yoga .. 11

Art & Craft

Crochet, Knitting & Fancywork

Friendly social group - open to beginners and experienced knitters. Come and learn the first steps in knitting / crocheting or finesse your skills.

Tuesdays 9.45am-11.45am

Fee: \$5 per session

Term 1 - 04 Feb to 01 April (9wks)

Term 2 - 22 April to 01 July (11wks)

Term 3 - 22 July to 16 Sept (9wks)

Term 4 - 7 Oct to 9 Dec (9wks)



Painting, Sketching, Drawing

These are self-directed groups who assist one another in mastering new techniques & skills. New participants are always welcome. Experience in sketching and/or painting is an advantage.

Eley Park Artists

Wednesdays 9.30am-12.30pm

Fee: \$5 per session

Term 1 - 31 Jan to 27 March (9wks)

Term 2 - 17 April to 26 June (11wks)

Term 3 - 17 July to 18 Sept (10wks)

Term 4 - 9 Oct to 18 Dec (11wks)

Art & Craft

Watercolour Painting

Artist, Antoinette Blyth, will guide you through the key elements from drawing/sketching techniques, use of brushes to colour mixing. A fantastic class to build your confidence, consolidate skills, engage with others and learn. All enquiries: Antoinette 0408 685 728

Wednesdays 1.00pm-3.00pm

Run in the Warrawong Annex - 32 Richmond St

Term 1 - 31 Jan to 27 March (9wks)

Term 2 - 17 April to 26 June (11wks)

Term 3 - 17 July to 18 Sept (10wks)

Term 4 - 9 Oct to 18 Dec (11wks)

Mosaics

Unleash your creativity in designing and crafting your very own mosaic art, suitable for both indoor and outdoor display. Our classes provide a comprehensive insight into the intricate mosaic-making process. You'll acquire the skills to expertly cut ceramic tiles, glass, and various materials, prepare surfaces, choose the right products, and master the art of grouting.

Fridays 9.30am-11.30am

Fee includes all materials

Term 1 - 21 Feb to 21 Mar (5wks) \$165

Term 2 - 06 June to 04 July (5wks) \$165

Term 3 - 22 August to 19 Sept (5wks) \$165

Term 4 - 07 Nov to 05 Dec (5wks) \$165



Art & Craft

Visual Art Journaling

Unlock the therapeutic power of visual art journaling for self-care and mental well-being. Join our workshops that employ the healing art therapy approach to enhance and sustain your mental health. Explore topics like self-care, emotions, anxiety, and overcoming procrastination through creative expression. Embrace the journey to a healthier, more balanced you.

Fridays 12.30pm-2.30pm

Term 1 - 21 Feb to 21 Mar (5wks) \$165

Term 2 - 06 June to 04 July (5wks) \$165

Term 3 - 22 August to 19 Sept (5wks) \$165

Term 4 - 07 Nov to 05 Dec (5wks) \$165

Exercise & Fitness

Pilates

Discover a fitness program dedicated to improving robust core postural muscles, providing essential support to your spine, enhancing posture, and fostering increased flexibility and strength development.

Wednesdays 6.15pm-7.15pm

Term 1 - 29 Jan to 2 April (10wks) \$170

Term 2 - 23 April to 2 July (11wks) \$187

Term 3 - 23 July to 17 Sept (9wks) \$153

Term 4 - 8 Oct to 10 Dec (10wks) \$170

Exercise & Fitness

Active and Fit

A great way to get fit in a very friendly and non-competitive environment. Movement to music with low-impact aerobics, plus yoga stretching and Pilates tummy tightening.

Tuesdays 2.00pm-3.00pm

Term 1 - 4 Feb to 1 April (9wks) \$144

Term 2 - 22 April to 1 July (11wks) \$176

Term 3 - 22 July to 16 Sept (9wks) \$160

Term 4 - 7 Oct to 9 Dec (9wks) \$160

Strength Training 'Strong People Stay Young'

Strength training goes a long way in terms of supporting bone health, preventing injury, and facilitating healthy aging.

Fridays 9.15am-10.15am & 10.30am-11.30am

Term 1 - 31 Jan to 28 March (9wks) \$159

Term 2 - 2 May to 27 June (9wks) \$159

Term 3 - 25 July to 12 Sept (8wks) \$142

Term 4 - 10 Oct to 12 Dec (10wks) \$177



Exercise & Fitness

Wednesday Walkers

Join the Heart Foundation Walking group for a fantastic opportunity to boost your fitness, socialise with friends, and foster a sense of community connection. Our group meets every Wednesday at 10am at Avenue Neighbourhood House, embarking on refreshing 45-minute walks. Bring your furry friends and little ones in prams; they are warmly welcomed. And in case of rough weather, we've got you covered with complimentary tea and coffee waiting inside.

Wednesdays 10.00am (Meet in carpark)

Term 1 - 29 Jan to 2 April (10wks)

Term 2 - 23 April to 02 July (11 wks)

Term 3 - 23 July to 17 Sept (9wks)

Term 4 - 8 Oct to 10 Dec (10wks)

Line Dancing

Our experienced and popular tutor, Stephen, was recently inducted into the Line Dancing Hall of Fame! Dance to popular music whilst getting fit - suitable for beginners to intermediates. Classes are held in the Guide Hall behind our main building at 87 Eley Road.

Thursday 7.00pm-9.00pm

Fee \$18 per session

Term 1 - 13 Feb to 3 April (8wks)

Term 2 - 24 April to 3 July (11wks)

Term 3 - 24 July to 18 Sept (9wks)

Term 4 - 9 Oct to 11 Dec (10wks)

Beginners Class!

*In the Hall, 87 Eley Rd

Fridays 2.00pm-3.00pm

Fee \$14 per session

Term 1 - 14 Feb to 4 April (8wks)

Term 2 - 2 May to 4 July (10wks)

Term 3 - 25 July to 19 Sept (9wks)

Term 4 - 10 Oct to 12 Dec (10wks)

Health & Wellbeing

Yoga

Yoga, as an exercise, offers a holistic approach to sculpting and firming the body, boosting metabolism, and effectively relieving tension and stress. Suitable for all age groups, including beginners, our welcoming sessions encourage you to wear comfortable attire and bring a yoga mat.

Tuesdays 6.45pm-7.45pm

Term 1 - 4 Feb to 1 April (9wks) \$161
Term 2 - 22 April to 1 July (11wks) \$195
Term 3 - 22 July to 16 Sept (9wks) \$161
Term 4 - 7 Oct to 9 Dec (9wks) \$161

Thursdays 6.00pm-7.00pm

Term 1 - 30 Jan to 3 April (10wks) \$178
Term 2 - 24 April to 3 July (11wks) \$195
Term 3 - 24 July to 18 Sept (9wks) \$161
Term 4 - 9 Oct to 11 Dec (10wks) \$178

Friday 9.30am-10.30am & 10.45am-11.45am

Term 1 - 31 Jan to 4 April (10wks) \$178
Term 2 - 2 May to 4 July (10wks) \$178
Term 3 - 25 July to 19 Sept (9wks) \$161
Term 4 - 10 Oct to 12 Dec (10wks) \$178

Saturday 9.30am-10.30am

Term 1 - 1 Feb to 5 April (10wks) \$178
Term 2 - 3 May to 5 July (10wks) \$178
Term 3 - 26 July to 20 Sept (9wks) \$161
Term 4 - 11 Oct to 13 Dec (10wks) \$178



Games & Social

Bingo (Chat & Chew)

New members are welcome to join this social group for morning tea and other activities such as bingo.

Tuesdays 9.30am-12.30pm

Fee \$5 per session

Term 1 - 4 Feb to 1 April (9wks)

Term 2 - 22 April to 1 July (11wks)

Term 3 - 22 July to 16 Sept (9wks)

Term 4 - 7 Oct to 9 Dec (9wks)



Hand & Foot

A fun card game. Purely social. Learn from those who love playing!

Fridays 12.30pm-3.00pm

Fee \$5 per session

Term 1 - 31 Jan to 4 April (10wks)

Term 2 - 2 May to 4 July (10wks)

Term 3 - 25 July to 19 Sept (9wks)

Term 4 - 10 Oct to 12 Dec (10wks)

Mahjong (Western Style)

An ancient Chinese game, which is a lot of fun - Beginners welcome.

Tuesdays 12.30pm-3.30pm

Fee \$5 per session

Term 1 - 4 Feb to 1 April (9wks)

Term 2 - 22 April to 1 July (11wks)

Term 3 - 22 July to 16 Sept (9wks)

Term 4 - 7 Oct to 9 Dec (9wks)



Music & Languages

Ukulele

Join our ukulele classes for an enjoyable and educational experience in learning to play this delightful instrument. Our classes are led by an experienced tutor who is passionate about helping you acquire the skills and knowledge you need. Come along, have fun, and embark on your ukulele journey with us.

Thursdays

Advanced 1.30pm-2.30pm

Intermediate 4.00pm-5.00pm

Mastering Basics 2.45pm-3.45pm

Term 1 - 30 Jan to 3 April (10wks) \$200

Term 2 - 24 April to 3 July (11wks) \$220

Term 3 - 24 July to 18 Sept (9wks) \$180

Term 4 - 9 Oct to 11 Dec (10wks) \$200



Writing

Writers' Group - Children's Literature

This is a peer review group specifically for those who write for children and teens. The function of the group is to support each other and share industry knowledge. The group is made up of published and unpublished writers of fiction and non-fiction.

Group meets **fourth Monday of the month**, please phone 9808 2000 for dates. 7.30pm - 9.30pm \$5.00 per session

Expressions of Interest

Please express your interest in these workshops and classes by emailing info@theavenue.org.au or calling 9808 2000. Workshops will run as soon as we have a minimum class size.

Designing with Canva

Enhance your digital skills as you delve into the fundamentals of design. Learn to craft custom templates or create original designs through a guided, step-by-step journey.



Barista Skills

This course aims to develop learners capabilities and understanding of what it takes to be a barista and pathway to further study or work in the hospitality sector.

Barista Skills



English for Families

This course is aimed at adults of CALD backgrounds with mixed levels of education. The focus is for learner to develop and consolidate language and literacy skills to enable them to access for education, volunteer opportunities or employment and to increase the quality of community connection.

Employable Me

This course is designed to assist adult learners to consider their future pathways and identify personal strengths and transferable skills, interests and employment options and will include sessions for local TAFE's.



Digital Skills

Point of Sale for Retail and Hospitality – This course is for adult learners who need to upskills or reskill digitally. This module will focus on digital platforms that are used in hospitality and retail and allow students to develop skills needed for employment or volunteer positions in any sales roles.



Expressions of Interest

Friday Workshops and Courses

We run one off / casual workshops and courses on a Friday, with participants enjoying lunch or a coffee in our Café before or after class.

Please express your interest in these workshops by emailing info@thevenue.org.au or call 9808 2000. Workshops will run as soon as we have a minimum class size.

Soap Making

Soy Candle Making

Digital Photography

Origami

Garden Lovers

Cooking

Poetry

Woodwork

Beginners Sewing

Jewellery Making

Card Making

Product Design

Unleash Your Passion, Share Your Hobby!

We believe that anyone can share their knowledge and skills. Do you have a specialist subject? A niche? A skill that you want to share? We are always looking for teachers to run classes and you could be one of them!

Our classes typically take place during the week. Most classes run for the length of the school terms, ie approx. 10 weeks per term and we have four terms. We aim to cover a variety of topics and interests, from Children's and Teen activities, Arts, Health and Wellbeing, Language & Literacy and Technology. Our workshops focus on topical subjects such as Kombucha, Preserving, Bee Keeping, Christmas Wreaths, Cooking Demonstrations and Sustainability.

If you have an idea for a class – we would love to hear from you.

Learn Local

Creative Minds Art



This course allows individuals with a disability to create art using a variety of mediums. Learners will work alongside an experienced tutor with extensive art and education experience to explore and complete a range of projects, create a portfolio, display and promote their art to the community through an art exhibition and learn how they can sell their art.

Term 1 - Visual Art Portfolio Journey

Term 2 - Explore Creative and Technical Art Skills

Term 3 - Displaying and Promoting Artworks

Term 4 - Selling Artistic Creations

Wednesday 9.30am-12.00pm & 1.00pm-3.30pm

Term 1 - 29 Jan to 2 April (10wks)

Term 2 - 23 April to 2 July (11wks)

Term 3 - 23 July to 17 Sept (9wks)

Term 4 - 8 Oct to 10 Dec (10wks)

*Limited number of funded positions available. Learn Local fees and charges can be confirmed by contacting ANH office directly on 9808 2000.

Cooking is an essential life skill and the Cook2Learn course will integrate literacy, language and numeracy in a practical and meaningful in the kitchen. For individuals with a disability or low literacy and numeracy skills, by the end of the program, individuals will not only develop practical skills in the kitchen, but will also be equipped with the numeracy skills necessary for a wide range of tasks.

Term 1 & 2 – Using Recipes

Term 3 & 4 – Weights and Measures

Mondays 10.00am-12.00pm

Term 1 - 3 Feb to 31 March (8wks)

Term 2 - 28 April to 30 June (9wks)

Term 3 - 21 July to 15 Sept (9wks)

Term 4 - 6 Oct to 8 Dec (9wks)

Wednesdays 10.00am-12.00pm

Term 1 - 29 Jan to 2 April (10wks)

Term 2 - 23 April to 2 July (11wks)

Term 3 - 23 July to 17 Sept (9wks)

Term 4 - 8 Oct to 10 Dec (10wks)

Thursdays 10.00am-12.00pm

Term 1 - 30 Jan to 3 April (10wks)

Term 2 - 24 April to 3 July (11wks)

Term 3 - 24 July to 18 Sept (9wks)

Term 4 - 9 Oct to 11 Dec (10wks)

*Limited number of funded positions available. Learn Local fees and charges can be confirmed by contacting ANH office directly on 9808 2000.

Learn Local



iPad for Learning

The course will expose & enhance learners understanding of alternative Information Technology. iPads significantly assist students with a disability, enhancing their ability to communicate, learn and access internet information. The course covers access to a range of applications and tools using an iPad to assist with everyday tasks and on-going learning. This course is designed to empower people with a disability to work towards goals and achievements to support independence.

Thursdays 1.30pm-2.30pm

Term 1 - 13 Feb to 3 April (8wks)

Term 2 - 15 May to 3 July (8wks)

Term 3 - 31 July to 18 Sept (8wks)

Term 4 - 23 October to 11 Dec (8wks)



Gaining the Edge - Digital Literacy (Computers)

This course focuses on digital literacy skills and learners will learn how to use productivity tools, file management, internet and email and become familiar with online systems in the context of employment or industry.

Thursdays 3.00pm-5.30pm

Term 1 - 13 Feb to 3 April (8wks)

Term 2 - 15 May to 3 July (8wks)

Term 3 - 31 July to 18 Sept (8wks)

Term 4 - 23 October to 11 Dec (8wks)

*Limited number of funded positions available. Learn Local fees and charges can be confirmed by contacting ANH office directly on 9808 2000.

Learn Local

Thursday Night Program

Thursday nights 6.15pm-8.45pm



The Thursday Night class provides a range of hands-on learning experiences and skills .

The classes will focus on building basic literacy and numeracy skills through activities contextualised to planning for travel and travelling on public transport, ANZAC Day and health and wellbeing.

Learners will be able to develop employability or life skills to improve their study or employment opportunities, participate in their community and become more independent.

*Limited number of funded positions available. Learn Local fees and charges can be confirmed by contacting ANH office directly on 9808 2000.

Learn Local

Life Skills



Every Monday 10.00am-2.30pm

The module will cover a range of learning activities that will focus on assisting individuals with an intellectual disability via a range of practical and social skills. There will be an underlying theme of health and wellbeing, delivered via activities that focus on building literacy and numeracy skills in everyday life.

Topics include

- Goal Setting, planning and time management
- Making decisions and choices in scheduling
- Teamwork
- Basic technology skills
- Keeping up to date with current issues and trends
- Money handling
- Exercise and nutrition
- Problem solving
- Job tasks
- Speaking up and building confidence

*Limited number of funded positions available. Learn Local fees and charges can be confirmed by contacting ANH office directly on 9808 2000.

Accredited Education

LifeSkills Program



22554VIC Course in Initial Adult Literacy and Numeracy
22555VIC Certificate I in Initial Adult Literacy and Numeracy
22567VIC Certificate I in Transition Education

These certificates are for a range of learners with special learning needs, a permanent cognitive impairment and / or mild intellectual disability. The curriculum for each certificate has been designed to provide skill development in reading, writing, numeracy and digital literacy. In addition, the courses strive to meet personal needs and facilitate community participation, further education and training options.

Each certificate enables learners to explore:

- basic literacy and numeracy
- use of everyday technology
- personal development
- community involvement
- volunteering opportunities
- vocational and employability skills

The courses are led by highly qualified, experienced and passionate trainers who provide a supportive environment for learning. Upon completion, students gain the confidence and skills they need to pursue employment, volunteer work or further study.

This training is delivered through State and Commonwealth Government Funding.

Tuesday, Wednesday, Thursday (1,2 or 3 day options) 10am - 2.30pm

Accredited Education

ReNew

Education re-engagement program for young people



22471VIC Course in Initial General Education for Adults

ReNew's primary focus is to educationally re-engage adolescents who are disconnected from mainstream schools. Students participating in ReNew often have multiple challenges associated with drug/alcohol use, mental health, family detachment and/or homelessness.

The program has been specifically developed for adolescents who are not ready to commence full time studies. The education program delivery has been specifically developed and has the capacity to be tailored to meet identified education gaps. The course provides learners who have low literacy and numeracy skills with the opportunity to build confidence, re-engage with learning and pathways onto further education.

**Students attend classes Monday, Tuesday & Wednesday mornings
Full Academic Year**

Accredited Education

ReFresh

Education re-engagement program for young people



22472VIC Certificate I in General Education for Adults

ReFresh is for adolescents between the age of 15 and 17 years old who are not attending school on a regular basis or have completely disengaged from education. ReFresh provides an educational alternative to mainstream secondary school. The program focuses on enhancing numeracy, literacy, and digital communication skills and provides a fundamental foundation for learning, by building a platform for students to engage and achieve. The interactive learning model together with the small class size greatly assists in building confidence and motivation.

ReFresh gives students strategies to shift attitudes and behaviours that may be barriers to success in the classroom, empowering students to make the most of education. One of the key success factors of the program is the wrap around support provided by the teaching and youth worker team.

The Program provides students with a wide range of on-going educational options and through successful completion, students are eligible for entry into VCE Vocational Major, TAFE and/or return to mainstream school.

Students attend classes Monday to Thursday
Full academic year

Accredited Education

Café - Introduction to Hospitality



These units are part of:

22554VIC Course in Initial Adult Literacy and Numeracy

The Café Introduction to Hospitality training program provides students with intellectual disability or an acquired brain injury (ABI) to develop food planning, preparation and customer service skills in an operational training café environment. Students develop the required skills in cooking, safe food handling and customer service to make them job ready.

This course is intended to support the development of simple literacy and numeracy skills for students with intellectual disabilities that are contextualised for the hospitality environment. The course supports learners with significant cognitive disabilities or impairments to develop skills in reading, writing and numeracy as they apply to working in a café environment. These skills facilitate the learner's ability and confidence to obtain work or volunteer in an entry level hospitality role. Students will receive a Statement of Attainment upon successful completion of the program.

Fridays 10.00am-2.30pm

This training is delivered through State and Commonwealth Government Funding.

Childcare & Early Learning

Monday 9.00am - 3.00pm
(3 + 4 year old group)
Tuesday to Friday
8.00am - 4.00pm



Operates during the school term.
Open select days during school holidays.

We provide occasional childcare for children aged 6 weeks to school age in a caring and safe environment.

We also provide a transport service to and from Kindergartens in the local area. A qualified staff member accompanies children in our community bus and escorts them safely in and out of kinder. Small fee of applies for each trip.

Our highly qualified educators are experts in creating programs that support and guide children in all areas of their learning and development, in ways that take into account each child's interests, strengths, experiences, culture and needs.

APPROVED Commonwealth Childcare Subsidy (CCS) provider.

**For further information on enrolling
please refer to our website
www.theavenue.org.au**

Community Choir

Every Tuesday evening at 6.30pm

Find Your Voice

Connect with your Community With One Voice
Whitehorse

Join our Community Choir lead by an experienced
Choir Conductor.

NO auditions required.

Every Tuesday night 6.30pm - 7.30pm - followed by
Supper



Singalong

Once a term Thursdays @ 10.00am

Our Singalongs are very popular, with a great group of people who enjoy
singing and dancing along with the music. Words provided.

Other special events

We love a special event here at the Avenue, please see list of occasions
throughout the year;

- Biggest Morning Tea
- Christmas in July
- Footy Day with special Footy Day lunch
- Seniors Week
- Art Competition
- Birthdays & Christmas Parties



Follow us Facebook



Whitehorse Community Houses

There are ten Neighbourhood Houses / Community Centres in Whitehorse;

- Avenue Neighbourhood House @ Eley
- Bennettswood Neighbourhood House
- Blackburn North Neighbourhood House
- Box Hill South Neighbourhood House
- Burwood Neighbourhood House
- Clota Cottage
- Kerrimuir Neighbourhood House
- Louise Multicultural Community Centre
- Mitcham Community House
- Vermont South Neighbourhood House



The Whitehorse Houses work collaboratively to bring people together to connect, learn and contribute in their local community through social, educational and recreational activities.

Avenue Neighbourhood House @ Eley's greatest asset is it's people - the people who come to classes, the people who volunteer and the people that work here.





At Sleeping Star Productions we believe every child is a Sleeping Star waiting to be woken. We aim to be an outstanding children's amateur theatre group encouraging children to follow their passion for theatre and performance. We encourage all our children to follow their passions whether that be as part of our cast or even our crew. Sleeping Star Productions is a non-for-profit organisation - we run solely on the work of our volunteers as well as our parents who all play a huge part in helping us operate. However there is always a cost for putting on a production. Our fees are kept as low as possible. All children between the ages of 9-14 years interested in participating in Sleeping Star for 2025 should attend our Information Night to book an audition. At Sleeping Star we are all-inclusive so we hold auditions not to find any exceptional talent but to give the children a total theatre experience right from the start.



Wizard of Oz Jnr

Auditions

Saturday 22 February 2025

(auditions must be booked at the Information Night)

Performance Dates

Friday 25 July 2025

Saturday 26 July 2025

Information Night

Thursday 13 February 2025 at 7.30pm

Tina 0417 541 050

Sleepingstarproductions2001@gmail.com

Rehearsal Venue

Avenue Neighbourhood House Eley Park

87 Eley Road, Blackburn South

Our Annual Art Competition



This Years' Theme

'This is a dream'

Tuesday 24 June - Sunday 27 July

Exhibition Open and Voting

Sunday 27 July

Closing Ceremony & Announcement of Winner/s

\$10 entry fee - includes canvas

***artwork must be done on supplied canvas**

(Portrait or landscape style allowed)

Collect anytime from Reception

All finalists to be exhibited at

The Avenue Neighbourhood House

87 Eley Road, Blackburn South

Exhibition open to view 9 July 2024

Prizes to be won:

People's Choice Award

Best Children's Art piece Award

Teen Award

Judges Choice Award

Contact

Avenue Neighbourhood House

Phone 03 9808 2000

Email info@theavenue.org.au



Nourishing our Neighbours Inc founded in 2023 to rescue food from landfill and provide food to those experiencing food insecurity in Whitehorse.

NoN is 100% volunteer run and partners with local supermarkets and bakeries.

We provide, fresh fruit and vegetables, bread and donated non perishable food.

Nourishing Neighbours will be at Avenue Neighbourhood House on

Tuesdays 10.30am- 11.30am

Thursdays 10.30am - 11.30am



EILEY

ON THE PARK CAFE

OPEN EVERY FRIDAY
10.00AM - 1.00PM
(DURING SCHOOL TERM)



Telephone: (03) 9808 2000

Email: info@theavenue.org.au

www.theavenue.org.au

